

**SMART  
PARTITIONS  
AUTOMATED  
SPACE SOLUTIONS**



## ► About Us

- Building on a legacy in aluminium and glass since 1983, we embark on a new era in 2025 — redefining spaces with cutting-edge partition systems and advanced automation.
- Partition, Building Automation, Fenestration

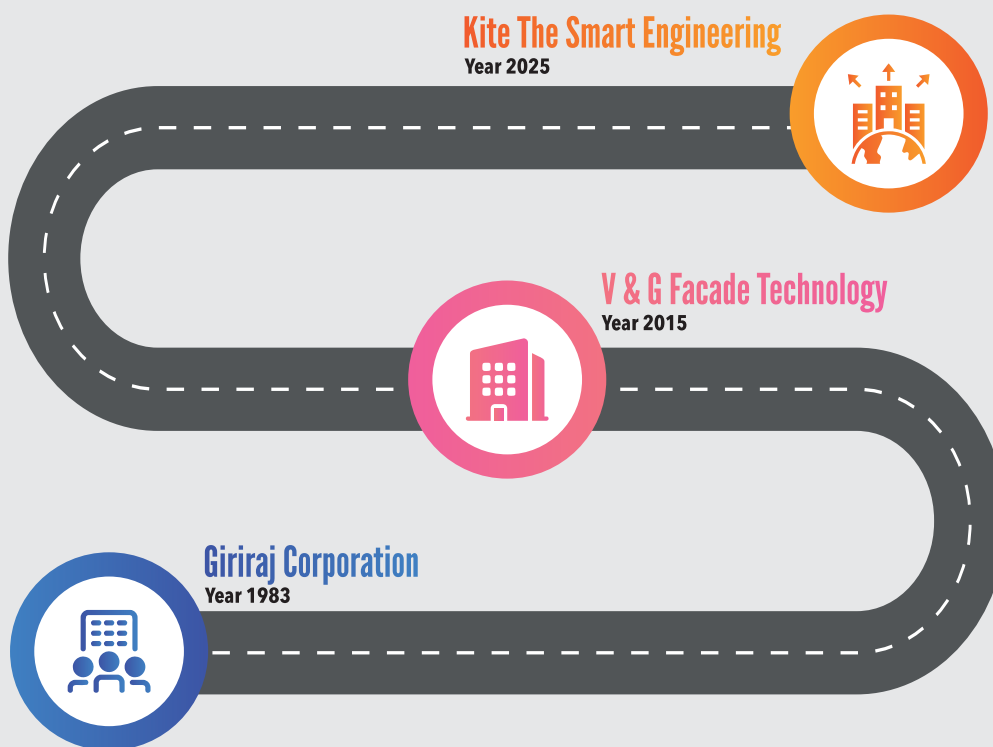
## ► Our Mission

- We are committed to deliver projects on time with uncompromised quality, while achieving excellence in both technical and commercial domains. Our goal is to provide the best possible solutions for our clients' needs and create awareness about sustainable, long-term approaches in the market. By embracing digitalization and automation, we ensure efficiency and innovation in every process. Constantly evolving, we upgrade our products and systems to stay ahead of time, proudly representing our company on the global stage.

## ► Our Vision

- To be the world's most trusted company in building automation and partition products — recognized for speed, accuracy, and consistency in every solution we deliver.

## ► Roadmap





### **KiteP100DG**

#### **FEATURES**

- **Track Profile:** 100mm x 25mm
- **Glass Options:** 10mm/12mm toughened, 10.52mm/12.52mm laminated
- **Door Frames:** Flush doors, 35mm or 45mm
- **Partition Height:** Up to 3000mm
- **System Type:** Double-glazed
- **Acoustic Rating:** ~48 dB



### **KiteP100SG**

#### **FEATURES**

- **Track Profile:** 100mm x 25mm
- **Glass Options:** 10mm/12mm toughened, 10.52mm / 12.52mm laminated
- **Door Frames:** Flush doors, 35mm or 45mm
- **Partition Height:** Up to 3000mm
- **System Type:** Single-glazed
- **Acoustic Rating:** ~33 dB



## ► PARTITIONS : Aluminium and Glass Partition



### KiteP60

#### FEATURES

- **Track Profile:** 60mm x 25mm
- **Glass Options:** 10mm/12mm toughened, 10.52mm/12.52mm laminated
- **Door Frames:** 35mm or 45mm doors
- **Partition Height:** Up to 3000mm
- **System Types:** Single-glazed, double-glazed, offset-glazed
- **Acoustic Rating:** ~50 dB (double-glazed), ~45 dB (single-glazed), ~32 dB (offset-glazed)



### KiteP45

#### FEATURES

- **Track Profile:** 45mm x 25mm
- **Glass Options:** 10mm/12mm toughened, 10.52mm/12.52mm laminated
- **Door Frames:** Flush door, 35mm
- **Partition Height:** Up to 3000mm
- **System Type:** Single-glazed
- **Acoustic Rating:** ~30 dB



## ► PARTITIONS : Solid and Metal Flush Partition



### KiteSP75W/SG/DG

#### FEATURES

- **Partition Type:** Demountable glass & solid partition, 75mm thick
- **Maximum Height:** Up to 3000mm (reinforcement required for higher elevations)
- **Configurations:** Full height, segmented, etc.
- **Infill Options:** Glass or sheet up to 8mm thick

### Kite 100F

#### FEATURES

- **Partition Type:** Demountable Glass/Metal Flush, 100 thick
- **Maximum Height:** Up to 3000mm (reinforcement required for higher elevations)
- **Configurations:** Full height, segmented
- **Groove Detail:** Constant 25mm at top and bottom
- **Adjustment:** Ceiling and floor level tolerance accommodated
- **Infill Options:** Stainless steel, aluminium, wood, or customized finishes





**Increased Productivity | Enhanced Privacy | Flexible Workspace | High noise cancelation.**



**Solo POD**



**Meeting POD**





### Integral Glass Blinds

#### Manual/Automatic

- **Product Type:** Integral blinds within double-glazed units
- **Glass Compatibility:** 22mm-32mm DGU
- **Operation:** Manual (magnetic slider) or motorized (remote/switch)
- **Blind Options:** Venetian or pleated
- **Maximum Size:** 2500mm (H) x 2000mm (W)
- **Functions:** Tilt & lift (Venetian), raise/lower (pleated)
- **Maintenance:** Dust-free, sealed inside glass
- **Applications:** Offices, hospitals, clean rooms, meeting rooms, premium interiors



### Switchable Film

- **A Sheet that can Switch from Transparent to Opaque and Vice Versa by Passing an Electric Current.**
- Maintains Privacy on Clicking Switch ON-OFF.
- Easy to Operate. | Switching Time 10ms | UV Blocking 99%
- Operating Voltage 35-70 VAC.
- **Maximum Width:** 1.8m (5.9ft)
- Suitable for Indoor and Outdoor Application.
- Custom Laser - Etched Patterns
- Available in Various Colors and Sizes.
- Less Power Consumption. | No maintenance Required.



### Glass Dividers

- **Glass Dividers:** Designed for elegance and versatility, available in stick-on or mechanical fix systems, fully customizable to complement any interior design.



### Electric Panel Mounting Unit

- Electric panel is a key component in modern commercial spaces. With integrated access systems, they provide privacy and confidentiality. Customizable in sizes from 100mm to 600mm, the units enable smooth integration of multiple systems while ensuring aesthetic design and reliable acoustic performance.



### KiteD35

#### Technical Specification

- **Finishes:** Available in multiple options
- **Performance:** Thermal and sound insulation
- **Design:** Glazing aligned with door
- **Hardware:** Compatible with European fittings

### KiteD75S/D

#### Technical Specification

- **Finishes:** Multiple options available
- **Performance:** Thermal and sound insulation
- **Design:** Glazing aligned with door
- **Compatibility:** European hardware, drop seals, concealed door closers
- **System Options:** Single-glazed and double-glazed

### KiteD45

#### Technical Specification

- **Finishes:** Multiple options available
- **Performance:** Thermal and sound insulation
- **Hardware:** Compatible with European fittings
- **System Type:** Single-glazed







### KiteD40

#### Technical Specification

- **Finishes:** Multiple options available
- **Performance:** Thermal and sound insulation
- **Design:** Single or double shutter
- **Compatibility:** European hardware, drop seals, concealed door closers
- **System Type:** Single-glazed



### KiteD50

#### Technical Specification

- **Finishes:** Multiple options available
- **Performance:** Thermal and sound insulation
- **Design:** Single or double shutter
- **Compatibility:** European hardware, drop seals, concealed door closers
- **System Type:** Single-glazed



### KiteDF

#### Technical Specification

- **Finishes:** Multiple options available
- **Infills:** Aluminium, stainless steel, or GI sheet with internal insulation
- **Performance:** Thermal and sound insulation
- **Design:** Single or double shutter, view panel, louvered vent
- **Compatibility:** European hardware, automation, and access control



## ► Sliding Interior Doors



### Telescope KiteTS45

#### Technical Specification

- **Door width:** 600mm to 1200mm
- **Door height:** Up to 3000mm
- **Weight Capacity:** 80/120kg
- Sliding Handle with VBH Tape
- Available in Multiple finish



### Slider KiteS45

#### Technical Specification

- **Door Width:** 600mm-1200mm
- **Door Height:** Up to 3000mm
- **Weight Capacity:** 80kg/120kg
- **Handle:** Sliding handle with VBH tape
- **Finishes:** Multiple options available
- **Options:** Synchro sliders





### Sliding KiteSL35, KiteSL49

#### Technical Specification

- **Performance:** Compatible for exterior wind load and rain protection
- **Hardware:** European standard
- **Finishes:** Multiple options available
- **Glass Options:** SGU, DGU, laminated



### Sliding Folding KiteSF

#### Technical Specification

- **Performance:** Designed for exterior use, resistant to wind load and rain
- **Hardware:** European standard
- **Finishes:** Multiple options available
- **Glass Options:** SGU, DGU, laminated
- **Panel Width:** 600mm-1200mm (typical)
- **Panel Height:** Up to 3000mm







### Sliding KiteSL35, KiteSL25

#### Technical Specification

- **Performance:** Resistant to exterior wind load and rain
- **Hardware:** European standard
- **Finishes:** Multiple options available
- **Glass Options:** SGU, DGU, laminated
- **Operation:** Smooth horizontal sliding system
- **Sealing:** Weather-tight gaskets and drainage profiles



### Casement KiteCS40, KiteCS50

#### Technical Specification

- **Performance:** Resistant to exterior wind load and rain
- **Hardware:** European standard
- **Finishes:** Multiple options available
- **Glass Options:** SGU, DGU, laminated
- **Operation:** Side-hinged or top-hung (inward / outward opening)
- **Sealing:** Multi-point locking with weather-tight gaskets





### Automatic Sliding Aluminium Door

#### Technical Specification

- **Door Weight:** <1x120kg/<2x180kg
- **Door Width:** 750-2000mm/650-1500mm
- **Power Supply:** AC 90V-240V50/60HZ
- **Power Consumption:** 55W/80W
- **Open Time:** 0-95 (Adjustable)
- **Manual Force:** <50N
- **Temperature Range:** -20-+50°C



### Automatic Industrial Flush Door

#### Technical Specification

- **Door Weight:** <1x120kg/<2x180kg
- **Door Width:** 750-2000mm/650-1500mm
- **Power Supply:** AC 90V-240V50/60HZ
- **Power Consumption:** 55W/80W
- **Open Time:** 0-95 (Adjustable)
- **Manual Force:** <50N
- **Temperature Range:** -20-+50°C



### Automatic Sliding Door Frameless

#### Technical Specification

- **Door Weight:** <1x120kg/<2x180kg
- **Door Width:** 750-2000mm/650-1500mm
- **Power Supply:** AC 90V-240V50/60HZ
- **Power Consumption:** 55W/80W
- **Open Time:** 0-95 (Adjustable)
- **Manual Force:** <50N
- **Temperature Range:** -20-+50°C



## Automatic Revolving Door

### Technical Specification

- Fully intelligent computer control unit
- **Power supply:** AC220V $\pm$ 10%, 50/60Hz
- **Power:** 200-400W, lighting 100W
- **Inverter:** multi-level control, frequency control

### FEATURES

- Induction rotation function, indoor heat preservation function, emergency stop function disabled person slow walking function, safety fire prevention function, motor lock function, door stop function, adjustable speed function.



## Automatic Sliding Folding Door

### Technical Specification

- **Door form:** single open / double open
- **Door height:** up to 2400mm
- **Door width:**  $\leq$  560mm
- **Door width:**  $W \leq 1200\text{mm} / W \leq 2400\text{mm}$
- **Power supply voltage:** AC220V, 50/60Hz
- **Motor power:** 65W 24V (1)/65W 24V (2)
- **Operating speed:** 2-4S
- **Temperature range:** -30 sim+ 40 deg \* C

### FEATURES

- Double unit system drive, aluminum alloy door + tempered glass,
- integral structure, seamless connection.
- When the door is opened, the door body is folded, which effectively saves space.
- The smooth door body automatically opens and closes, providing.
- a comfortable passage space and close to the smooth door effect.
- A new generation of deeper folding doors, safety anti-pinch, insulation, sound insulation, fire retardant, and more resistance to rebound.
- Applicable to hospitals, shopping malls, office buildings, airports, showrooms, homes and other occasions.



## ► Automatic Windows



Automatic Casement Window



Automatic Sliding Window



Automatic Vertical Sliding Window







## Sliding and Folding Glass

### Features

- **Sound Insulation:** ~44 dB
- **Panel Height:** Upto 4500mm
- **Panel Width:** 600mm to 1200mm w/w
- **Frame Construction:** Aluminium, MS Steel, or Plywood
- **Surface Board:** 10mm glass
- **Operation:** User-friendly, easy to operate
- **Parking Layouts:** Flexible, no restrictions
- **Design Surfaces:** Multiple customizable options



## Sliding and Folding Solid

### Features

- **Thickness:** 85mm or 100mm
- **Sound Transmission Class (STC):** 51 dB at 4000Hz
- **Width Range:** 750mm to 1230mm
- **Height Range:** 2400mm to 9500mm
- **Frame Material:** Aluminium and Galvanized Iron (G.I.)
- **Operation:** Manual with motorized locking
- **Panel Finish:** Raw MDF
- **Stacking Options:** Center or Side Stacking
- **Track Type:** Aluminium Extruded Track, Natural Anodized Finish
- **Finish Options:** Laminate, Fabric, Veneer, polyester Board, Grooved Slats, Glass, Leather, Wallpaper, or as per client requirements.

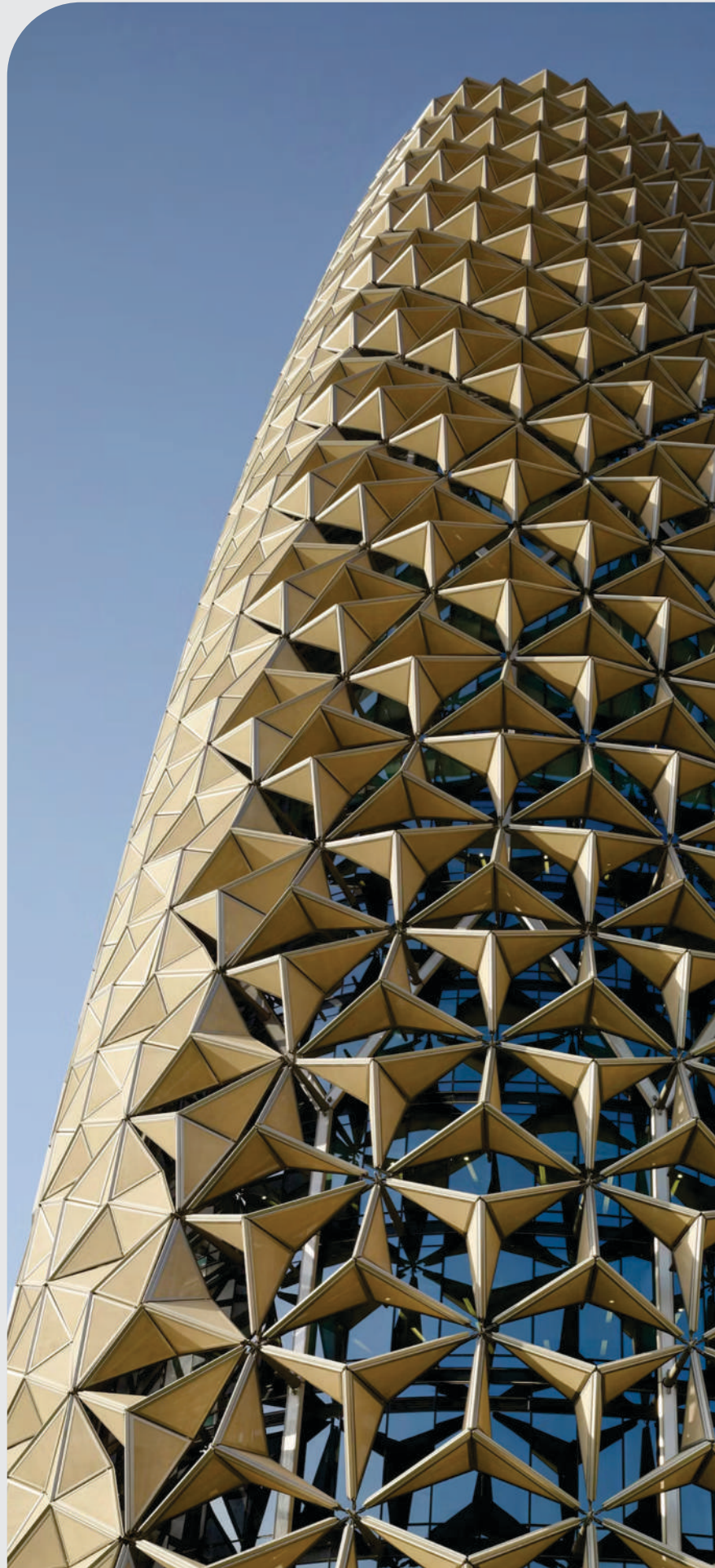


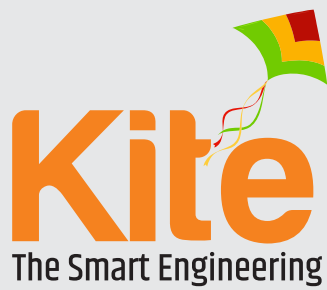


### Dynamic Facade

#### Features

- Energy Efficiency
- Occupant Comfort and Well-being
- Sustainability
- Aesthetic Appeal and Visual Interest
- Adaptability and Flexibility





+91 98250 75668



[contact@kitethesmartengineering.in](mailto:contact@kitethesmartengineering.in)



[www.kitethesmartengineering.in](http://www.kitethesmartengineering.in)



6H, Vardan Exclusive, Stadium Road, Navrangpura,  
Ahmedabad-380009